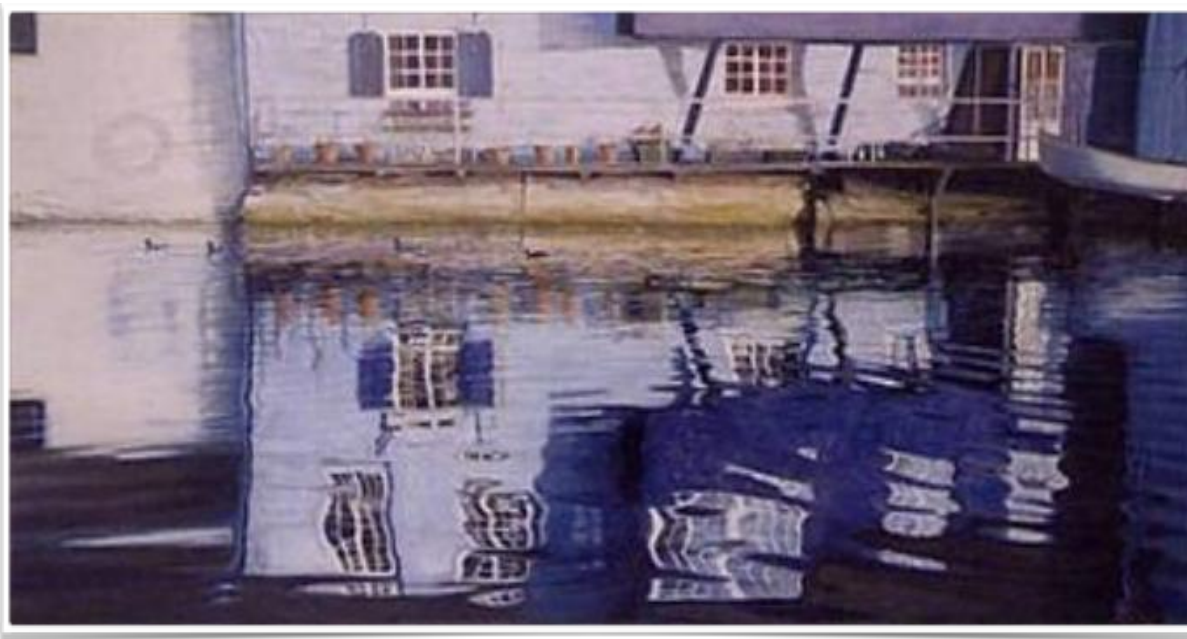


PAF NEWS

A bi-monthly newsletter for the Friends of the Polperro Arts Foundation

"Ducks on their way to 'The Props', Polperro Harbour"



Welcome to the PAF Newsletter, the first of six that we will circulate each year.

In this issue we are featuring Sue Lord's 2007 painting of ducks heading upriver towards Roman bridge by The House on the Props, a 16th century inn. Here is Sue's description:

"This is quite a large oil painting (120 x 60 cms) which took me two years to paint. I was then teaching full time, but even now it would probably take the same length of time as it was a challenge and took some balancing.

I was walking along the quay with my dog, Pip, when I looked across the harbour and was captivated by the shadow of the lifebelt on the side of the balcony of 'Harbour View'. Together with all the blues and the complex reflections it was mesmerising. Anyon Cook (book illustrator and portrait artist) and her husband, the artist Frederick Cook, had lived there. Each spring she planted sunflowers in the terracotta pots; all that remains are the long stalks all along the balcony.

I particularly enjoyed painting the almost abstract pattern of the reflections directly under the balcony and trying to create the depth of colours in the shadows under the boat - mostly achieved by a mix of viridian, ultramarine and Alizarin crimson.

When I look at the painting, now in my sitting room, I feel pleased."

Let us know if you have any questions about the painting and Sue will answer them in the next issue of the newsletter. A framed print of this painting is on show in the Polperro Post Office and is being offered as the prize in a **raffle**; tickets are on sale until at least mid-June, see page 3 below for more details.

From the history books

It has been said that the great landscape artist JMW Turner almost visited the village during his tour of Devon and Cornwall in 1809. He certainly painted both Looe and Fowey; but his donkey refused to walk down Talland Hill because it was too steep. Unfortunately those who have studied Turner's itinerary say there is no basis for this otherwise charming story.



images of life and people in the village including 82 head-and-shoulders portraits of fishermen.

In the 1880s, publicity from the popular novel, 'Adam and Eve' by Louisa Parr, and a series of engraved views of Polperro in the 'Illustrated London News', brought down some well-known artists to the village, leading to Polperro subjects winning acclaim at the Royal Academy. These artist visitors included Charles Boutwood and Herbert Butler, who both married local girls.



The earliest Polperro art works that we know of were by Joseph Farington in about 1810 (left) and William Daniell in 1823 (below). Interestingly, both show the net loft and the old St Peter's chapel above what is now Mont St Pierre. The comparison on the next page suggests some degree of artistic licence. From the 1860s artists were visiting more regularly, most coming from Plymouth. Lewis Harding was a pioneering photographer who lived here during the 1860s-1880s. He recorded many

By the time of the 1891 census, the 21-year-old Alice Puckey was apparently able to make a living as an artists' model. By 1900, a number of artists had become resident in the village and painting schools were established, whilst foreign artist visitors (including groups of American art students) were a regular feature in the summer months in the pre-WW1 period. By the 1930s, Polperro was being called the haunt of "half the artists of Britain" and one of the most painted villages in the world.

The art historian David Tovey is now engaged in a project to collect and highlight the numerous works from Polperro's art history. He is preparing a two-volume book, entitled 'Polperro - Cornwall's Forgotten Art Centre', which is due to be published to coincide with an exhibition in the Falmouth Art Gallery in the Spring of 2021. Some of David's findings are on his website: <www.stivesart.info/art-in-polperro>

Future issues of our newsletter will introduce you to other artists and their work from days gone by.



News from the gallery

We were closed from 6 January till 15th February and used the time to make some changes. Parts of the walls needed repainting, we re-hung the pictures and added a visitors' drawing table; Tracy has designed some cards that children can colour-in and send as postcards. We also repainted the stairs and Sue crafted some quotes from famous artists on the risers; unfortunately a gull somehow got in before the paint dried and left its webbed footprints all the way up. We welcomed Babs Taylor as a new member and her work has added a further touch of colour which blends nicely with the rest of our collection.

For a while things went well and both footfall and sales looked promising. All that changed abruptly with the onset of the crisis that we are now facing and we had no choice but to close indefinitely from 21st March. The only slight consolation is that we are entering the time of year when Polperro and the surrounding countryside look their best and we will be seeing scenes like the one below. Let's hope it's not too long before we can all get out and enjoy them.

A raffle

As noted on page 1 Sue has kindly offered a framed print of her painting "Ducks on the way to 'The Props', Polperro harbour" as the prize in a raffle. The picture is on display in the Polperro Post Office where tickets will be available until at least mid-June, the final date to be announced when we are on our way to returning to normal life. It's a chance to own a great piece of Polperro art while helping the PAF through a financially difficult period. Many thanks for your support.



About the Foundation

The Polperro Arts Foundation occupies a spacious, well-lit harbour-side gallery situated between 'The Three Pilchards' and 'The Blue Peter' pubs en route to the beach. The Foundation was set up by a group of talented local artists in 2001 who were keen to continue the long tradition of promoting the arts in Polperro. We have arranged and been involved in many art and musical events and activities ever since. Find out more about us and our past achievements on our website at the link below.

Our Team

Currently we have seven full members all of whom live and work locally: **Barbara Ellis**, artist; **Sandy Horton**, glass; **Paul Lightfoot**, photographer and writer; **Sue Lord**, artist; **Babs Taylor**, artist; **Tracy Watts**, graphic designer and illustrator; and **Lisa Woollett**, author and photographer. Four guest artists have work displayed in the gallery: **Rosamund Jane**, artist; **Charles Summers**, artist and fan-maker; **Nicola Sweetzer-Sturt**, artist; and **Brian Trudeau**, wood and glass sculptor. We also have an invaluable group of volunteers: **Chris Starnes**, **Helen and Peter Hickey**, **Frieda Hill** and **Jacky Humby**.

What we offer

- We **exhibit** an extensive, evolving collection of local art works in an attractive and convenient setting in the middle of Polperro.
- We arrange and host occasional **events** for the benefit of local residents and visitors. Our website lists the many events and activities that we have hosted and supported over the years.
- We will circulate this free **newsletter** six times each year; email us at the address below to suggest others who might like a copy. Future issues will feature work by our members; our own events and other events from the local art scene; plans for 'open studios'; and more 'from the history books'.
- We will offer freely-available examples of our work as [screen-savers](#), [desktop wallpaper](#) and in other formats to bring a taste of Polperro and its art to your home computers, tablets and phones.

Support us

Renting, insuring and maintaining the gallery is expensive and we need your support, particularly during this extremely difficult period. Please click here to make a donation through [PayPal](#) or visit our website at the link below for other options. Thank you for any help you can give!

Contact us

You will always be welcome to drop into the gallery when we re-open, meanwhile contact us by mail, email or through our website: Polperro Arts Foundation, Quay Road, Polperro, Cornwall PL13 2QU; Email: polperroarts@gmail.com Website: www.polperroarts.org

